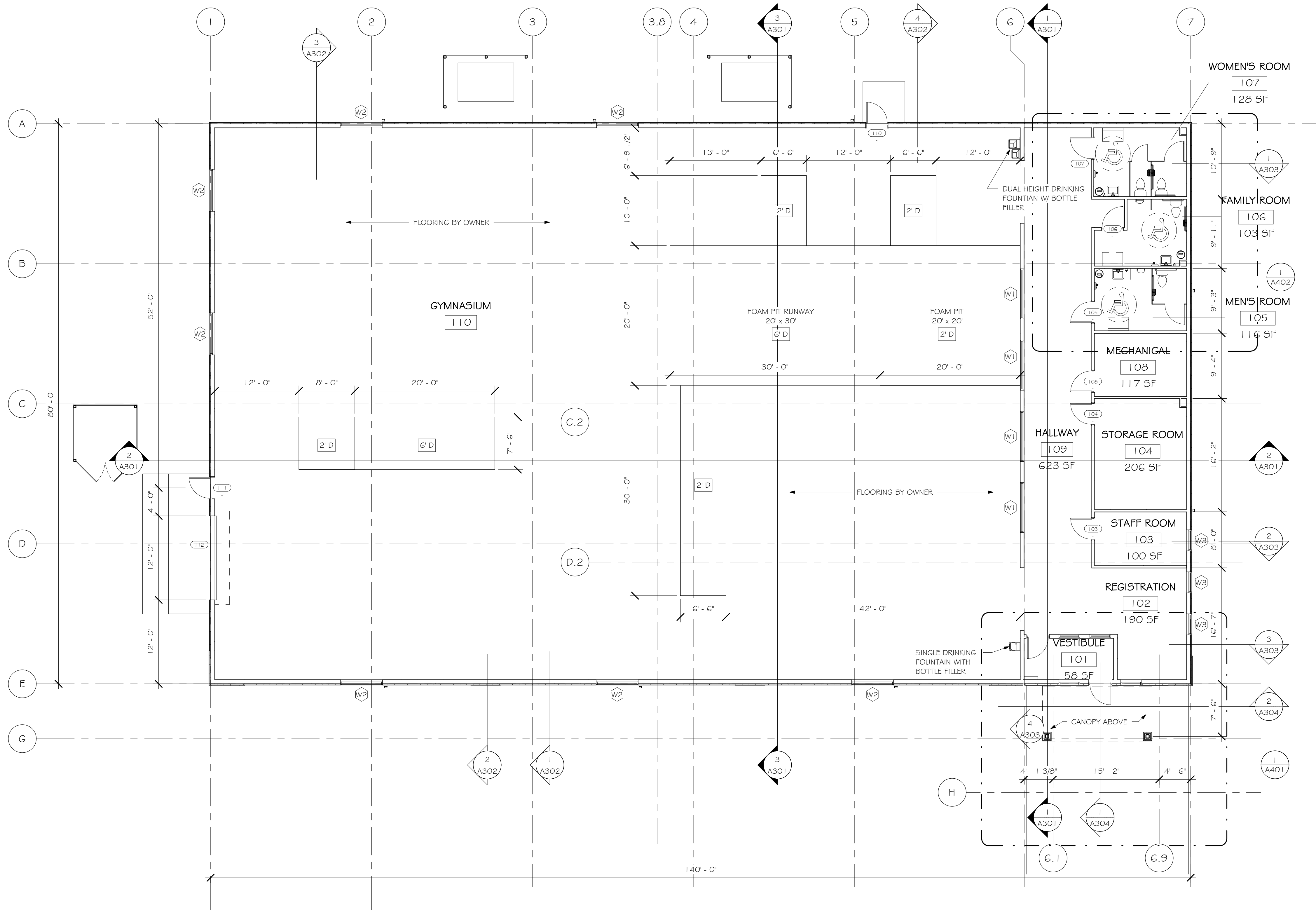
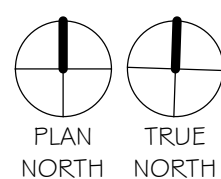


1 FIRST FLOOR
 SCALE: 1/8" = 1'-0"



PRELIMINARY
 FOR REVIEW
 PURPOSES ONLY

REV	DATE
DATE ISSUED	12/17/2021
ISSUE PHASE	PRELIMINARY

PROJECT TITLE
JUMP AROUND GYMNASTICS

PROJECT OWNER
BEN O'NEILL

PROJECT LOCATION
 202 LIMESTONE PASS COTTAGE GROVE, WI 53527

SHEET TITLE
FIRST FLOOR PLAN

PROJECT NUMBER
52347

SHEET NUMBER
A101