

**FCW3063**



**Date:** \_\_\_\_\_

**Type:** \_\_\_\_\_

**Fixture:** \_\_\_\_\_

**Project:** \_\_\_\_\_

**Approved:**

**FCW3063** Exterior Decor fixture is a 14 inch round, IP65 rated, ADA compliant, easy to install fixture with an impact resistant lens and face options to meet the design requirements of your building. This round face fixture in the FC Lighting Exterior Decor line of products can be ceiling, wall or surface mounted.

**SPECIFICATIONS**

**PHYSICAL**

<b>dimensions</b>	14.1" Ø x 6.7" Deep
<b>weight</b>	4 lbs
<b>housing</b>	Marine grade, corrosion resistant, heavy gauge high pressure die-cast aluminum; captive stainless steel tamper resistant hex head socket screws
<b>lens</b>	Impact resistant, UV stabilized, white polycarbonate diffuser
<b>mounting</b>	Mounts directly to standard junction box; masonry applications use four (4) 0.25" x 0.75" screws with lead anchors (fasteners not included, j-box by others)
<b>ingress protection</b>	IP65 Rated. Suitable for wet, damp or dry location application, with extruded silicone gasket to seal out contaminants
<b>finish</b>	Six stage chemical iron phosphate conversion pre-treatment. Polyester powder coat finish, 18 µm Min., 5000hr salt spray test (ASTM B117) compliant with Florida / AAMA 2604 specification.

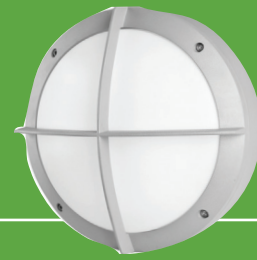
**PERFORMANCE**

<b>color temperature</b>	2700K	3000K	3500K	4000K	
<b>lumen output</b>	1150 lm	1450 lm	2500 lm	3750 lm	5000 lm
<b>lifetime</b>	> 70,000 hours / L70 or better				
<b>color consistency</b>	3 SDCM / standard: 85 CRI   optional: 90 CRI				
<b>operating temperature</b>	-13°F to 104°F (-25°C to 40°C)				
<b>junction temperature</b>	73°C @ T <sup>A</sup> 25°C				
<b>warranty</b>	5-Year limited warranty (refer to website for details)				

**ELECTRICAL**

<b>input voltage</b>	Universal 120-277VAC   Optional: 347VAC (integral)
<b>power supply</b>	Integral Class II, electronic high-power factor > 94% @120V
<b>certifications</b>	ETL/cETL Listed, CEC Title 24 JA8 compliant (only 90 CRI complies)
<b>standards</b>	UL 1598 / CSA C22.2 No. 250.0 - Class II / IES LM-79 / LM-80
<b>power consumption</b>	52W @ 120V - 277V (Maximum)
<b>dimming</b>	Standard: 0-10V (1%)   Optional: ELV (120V only) / DMX (integral) / DALI (integral)

Due to continuous development and improvements, specifications are subject to change without notice. FC Lighting reserves the right to change lab test details or specifications without notice. Product use certifies agreement to FC Lighting terms and conditions. FCC Series Cylinder Lights are engineered and produced in our Illinois manufacturing facility.



# Ordering Information

## ORDERING INFORMATION

FCW3063								
SERIES	VOLTAGE	CCT	CRI	LUMENS	FINISH	OPTIONS		
FCW3063	UNV UNV 120V-277V	27K 2700K	CRI85 85 CRI (Standard)	12L 1150 lm (12W)	BKE Black (AAMA 2604)	LD 0-10V Dimming, 1% (Standard)		
	347V 347V (Integral)	3K 3000K	CRI90 90 CRI	15L 1450 lm (15W)	BRE Bronze (AAMA 2604)	ELV ELV Dimming (120V Only)		
	120V 120V AC (PE Option)	35K 3500K		25L 2500 lm (26W)	SLE Silver (AAMA 2604)	DMX DMX Dimming (Remote Only)		
	277V 277V AC (PE Option)	4K 4000K		38L 3750 lm (39W)	WHE White (AAMA 2604)	DALI DALI Dimming (Remote Only)		
				50L 5000 lm (52W)	CCE Custom Color (AAMA 2604)	TPS Tamper Proof Screws		
					BKED Black (AAMA 2605)	PE120 Photo Eye for 120V		
					BRED Bronze (AAMA 2605)	PE277 Photo Eye for 277V		
					SLED Silver (AAMA 2605)	SP20 20kV Surge Protector		
					WHED White (AAMA 2605)	BBUR Battery Backup, Remote		
					CCED Custom Color (AAMA 2605)	SP20-BBUR (2) 20kV Surge Protectors (1/LED Driver, 1/BBUR) & Battery Backup (Remote)		
						F Fused Line		
						CSM Conduit Surface Mount Box		

**Consult Factory for other options and configurations.**

To ensure you receive proper configurations for your lighting specifications, contact us directly about any unique application requirements. This may include but not be limited to lumen output, mounting needs, or electrical requirements.

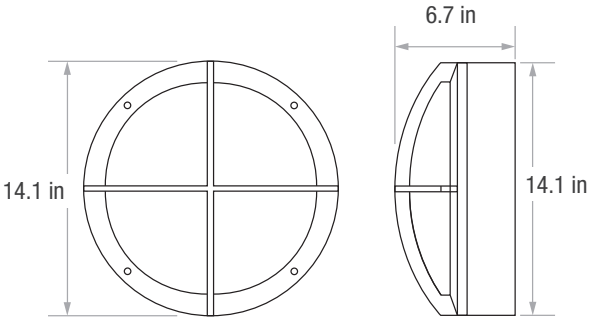
Due to continuous development and improvements, specifications are subject to change without notice. FC Lighting reserves the right to change lab test details or specifications without notice. Product use certifies agreement to FC Lighting terms and conditions. FCC Series Cylinder Lights are engineered and produced in our Illinois manufacturing facility.



# Dimensions

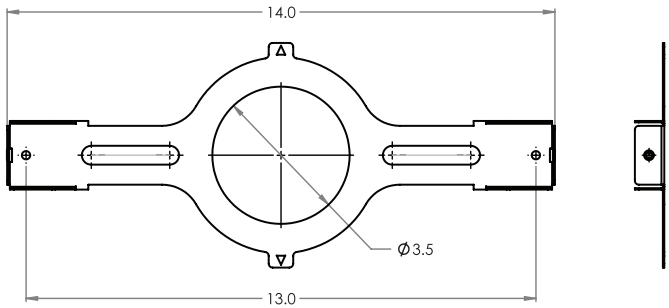
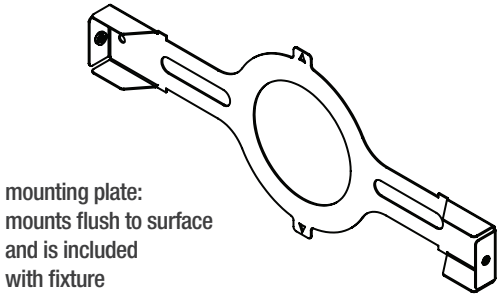
## PRODUCT DIMENSIONS - STANDARD PRODUCT

width	14.1" Ø
depth	6.7" D

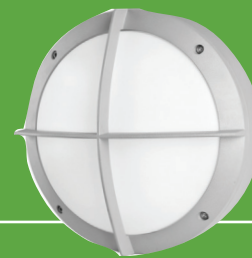


## MOUNTING - j-box sold by others

mounting plate width	14" W
----------------------	-------



Due to continuous development and improvements, specifications are subject to change without notice. FC Lighting reserves the right to change lab test details or specifications without notice. Product use certifies agreement to FC Lighting terms and conditions. FCC Series Cylinder Lights are engineered and produced in our Illinois manufacturing facility.



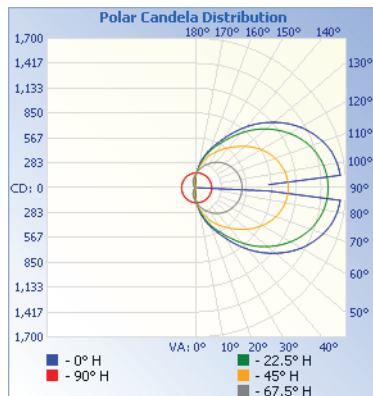
# Photometry

## OPTICAL DISTRIBUTION

<b>lumen output</b>	5000 Lm @ 4000K
<b>power consumption</b>	52W

	Illuminance at a Distance		
	Center Beam fc	Beam Width	
1.7ft	59.1 fc	4.6 ft	1.6 ft
3.3ft	15.7 fc	9.0 ft	3.2 ft
5.0ft	6.83 fc	13.6 ft	4.8 ft
6.7ft	3.80 fc	18.2 ft	6.4 ft
8.3ft	2.48 fc	22.5 ft	8.0 ft
10.0ft	1.71 fc	27.2 ft	9.6 ft

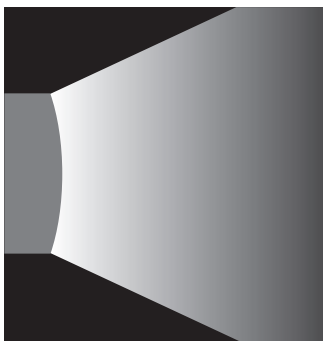
■ Vert. Spread: 107.3°  
■ Horiz. Spread: 51.3°



**iti illuminations testing laboratory :**

FCW3063

FIND IES FILES ON FCLIGHTING.COM



Due to continuous development and improvements, specifications are subject to change without notice. FC Lighting reserves the right to change lab test details or specifications without notice. Product use certifies agreement to FC Lighting terms and conditions. FCC Series Cylinder Lights are engineered and produced in our Illinois manufacturing facility.

US Commercial Lighting Manufacturer Since 1982

**Specification Sheet**