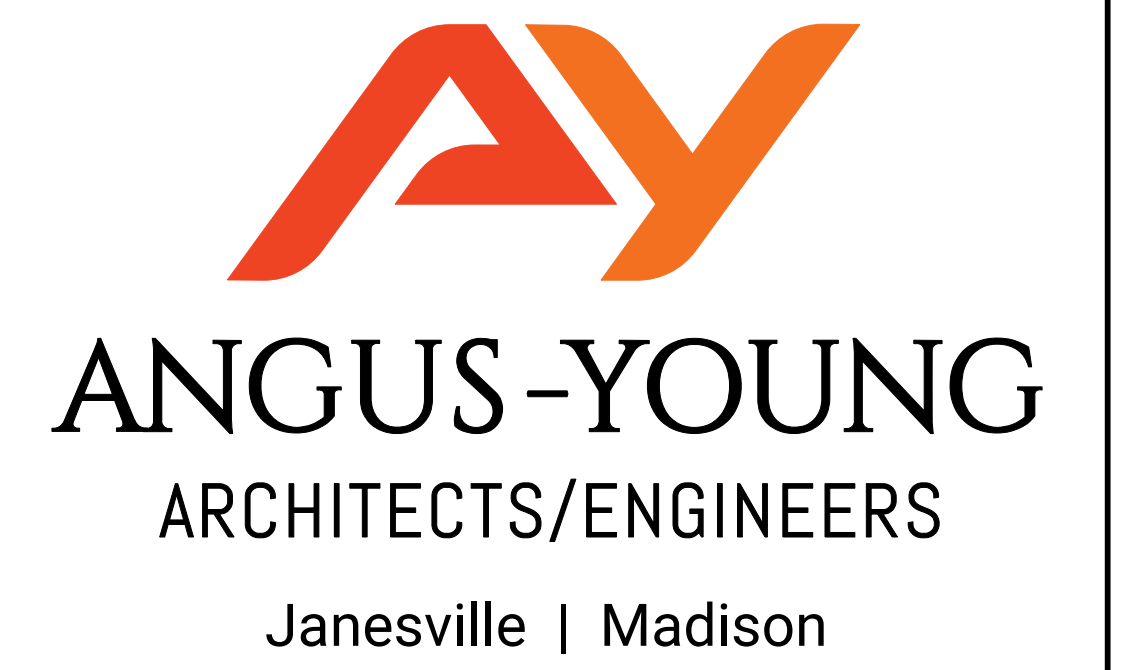


# BRANDtek | Biodome Facility - Cottage Grove Commerce Park



INTERSTATE COMMERCE PARK LOT 1  
COTTAGE GROVE, WI 53527

BRANDtek | BIODOME FACILITY

AY PROJECT NUMBER: 71620

## SHEET INDEX:

- SITE/ CIVIL
- C1 EXISTING CONDITIONS PLAN
  - C2 PROPERTY SITE & DRAINAGE PLAN
  - C3 GRADING & EROSION CONTROL PLAN
- LANDSCAPE
- C601 LANDSCAPE PLAN
- ARCHITECTURAL
- A201 CONCEPTUAL ELEVATIONS
  - A701 CONCEPTUAL RENDERINGS

## REGULATORY DATA:

## LOCATION MAP:



ISSUANCES / REVISIONS		
NO:	DESCRIPTION:	DATE:
1	VILLAGE SITE PLAN REVIEW	4-28-2021

**PRELIMINARY  
NOT FOR CONSTRUCTION**

Due to electronic distribution, this drawing may not be printed to the scale indicated on the drawings. Do NOT use scale to determine dimensions or sizes.  
No part of this drawing may be used or reproduced in any form or by any means, or stored in a database or retrieval system, without prior written permission of.  
ANGUS - YOUNG ASSOCIATES, INC. Copyright © 2020 All Rights Reserved

## PROJECT TEAM

<b>OWNER:</b> BROCK RYAN 2501 Parmenter St #200a Middleton, WI 53562  CONTACT: Brock Ryan EMAIL: brock.ryan@brandtek.com PHONE: (608) 827-4525	<b>ARCHITECT:</b> ANGUS-YOUNG ASSOCIATES, INC. 16 North Carroll St, suite 610 Madison, WI 53703  CONTACT: Jeff Davis EMAIL: jdavis@angusyong.com PHONE: (608)756-2326	<b>DESIGN/BUILDER</b> SUPREME STRUCTURES, INC. 2906 Marketplace Dr Madison, WI 53719  CONTACT: Dan Berler EMAIL: dan@supremestructures.com PHONE: (608) 224-0777	<b>LANDSCAPE ARCHITECT</b> ANGUS-YOUNG ASSOCIATES, INC. 555 S. River St. Janesville, WI 53748  CONTACT: Katie Usell EMAIL: k.usell@angusyong.com PHONE: (608)756-2326	<b>CIVIL ENGINEER</b> JT ENGINEERING 6325 Odana Road Suite 2 Madison, WI 53719  CONTACT: Dylan Douglas EMAIL: dyland@jt-engineering.com PHONE: (608) 204-0909
---	--	---	--	--

35	30	25	20	15	10	05
34	29	24	19	14	09	04
33	28	23	18	13	08	03
32	27	22	17	12	07	02
31	26	21	16	11	06	01

608.756.2326  
www.angusyong.com

COVER SHEET

**G001**

DETAILS IN THIS SET ARE PLACED ON THE SHEETS AND NUMBERED WITH RESPECT TO THE GRID ABOVE. CONSEQUENTLY, DETAILS ON A GIVEN SHEET MAY OR MAY NOT BE NUMBERED CONSECUTIVELY.

SCALE 1" = 1'-0"

PLOTTED BY: jefid

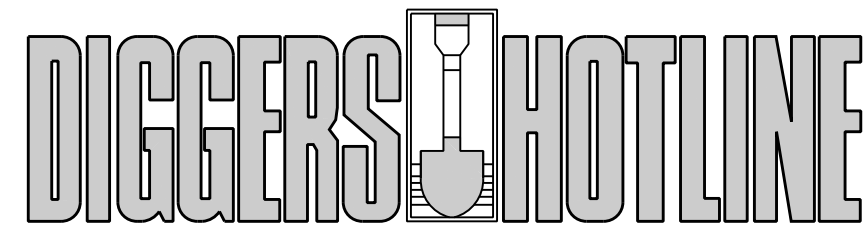
DATE: 4/28/2021

ORIGINAL SIZE: 24" x 36"





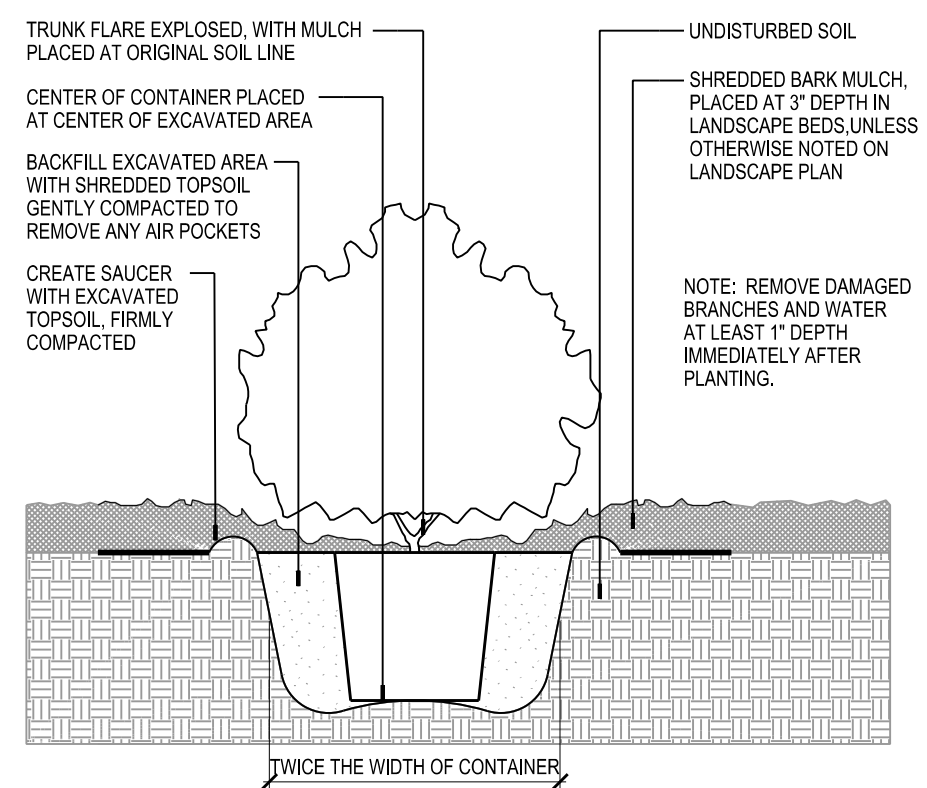




CALL TOLL FREE 1-800-242-8511  
 MILWAUKEE AREA 414-259-1181  
 FAX A LOCATE 1-800-338-3860  
 TDD (HEARING IMPAIRED) 1-800-542-2289  
 ONLINE: www.DiggersHotline.com  
 WISCONSIN STATUTE 182.0175 (1974) REQUIRES A MINIMUM  
 OF THREE (3) WORKING DAYS NOTICE PRIOR TO EXCAVATION.

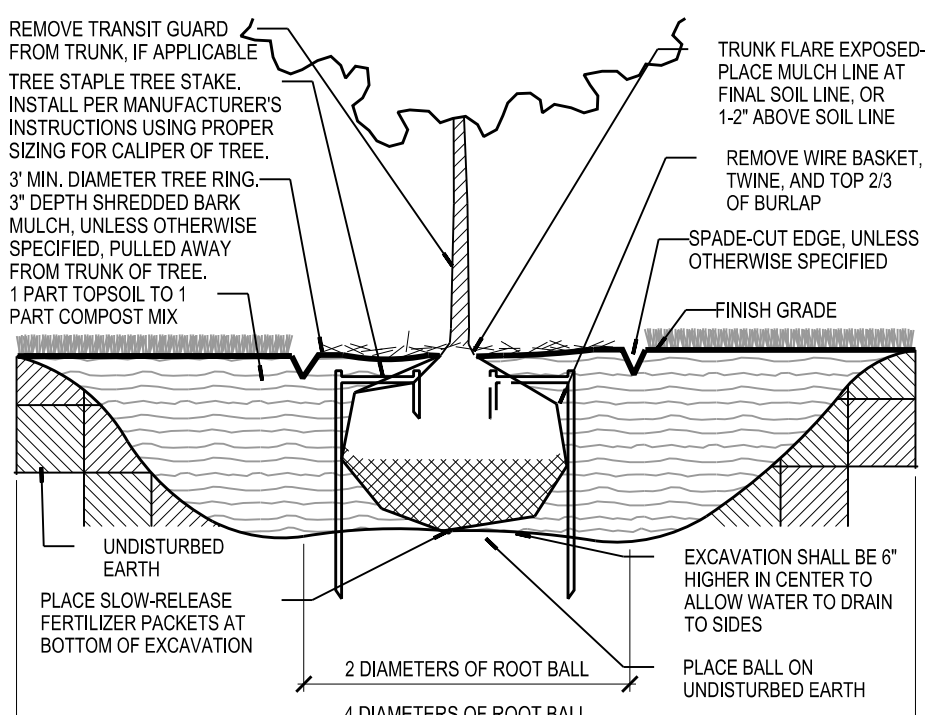
LANDSCAPE SYMBOL LEGEND	
	SHADE TREE
	ORNAMENTAL TREE
	EVERGREEN SHRUB OR TREE
	DECIDUOUS SHRUB
	ORNAMENTAL GRASS
	PERENNIAL
	EXISTING VEGETATION
	EXISTING EVERGREEN

NOTE: ALL SYMBOLS MAY NOT BE USED IN THIS SET.



**22 CONTAINER PLANTING IN LANDSCAPE BED**

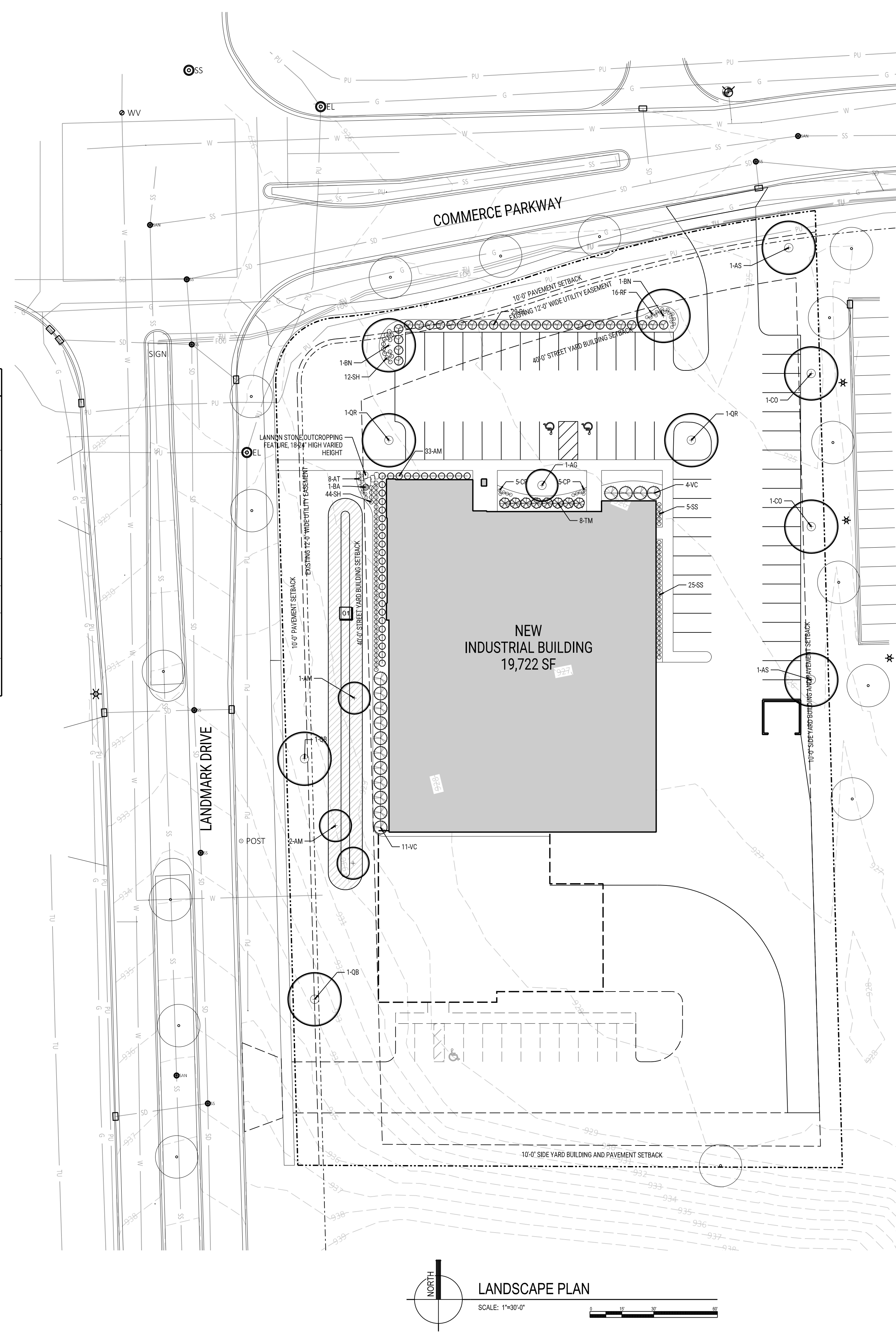
C601 SCALE: 1"=1'-0"



NOTES: 1. DETERMINE THE PROPER SIZE TREE STAPLE DEVICE BY MEASURING THE DEPTH OF THE ROOT BALL AND ADDING 12" TO 18". THIS SHOULD EQUAL THE LONG PRONG SIZE OF THE DEVICE. IF NECESSARY, ROUND UP TO THE NEXT SIZE.  
 2. IN EXTREME WIND AND/OR LOOSE SOIL CONDITIONS, USE THREE TREE STAPLE DEVICES PER TREE AND/OR ROUND UP TO THE NEXT SIZE.

**21 B.B. SHRUB AND TREE PLANTING DETAIL**

C601 SCALE: NONE



LANDSCAPE PLANT LEGEND						
SYMBOL	BOTANICAL NAME	COMMON NAME	INSTALLED SIZE	ROOT	MATURE SIZE	QTY
<b>TREES:</b>						
AG	<i>Amelanchier x grandiflora</i> 'Autumn Brilliance'	Autumn Brilliance Apple Serviceberry	6" High Multistem	B.B.	15' H x 15' W	1
AS	<i>Acer saccharum</i> 'Baillista'	Fall Festival Sugar Maple	2" Cal.	B.B.	50-75' H x 50' W	2
BN	<i>Betula nigra</i>	River Birch	6" High Multistem	B.B.	60' H x 25' W	2
CO	<i>Celtis occidentalis</i>	Common Hackberry	2" Cal.	B.B.	50' H x 45' W	2
QB	<i>Quercus bicolor</i>	Swamp White Oak	2" Cal.	B.B.	50' H x 40' W	2
QR	<i>Quercus robur x bicolor</i> 'Long'	Regal Prince English Oak	2" Cal.	B.B.	45' H x 18' W	2
<b>SHRUBS:</b>						
AM	<i>Aronia melanocarpa</i> 'UCONNAM165' PPAF	Low Shrub Mound Black Chokeberry	1' H	2-3 Gallon	12" H x 2-3' W	33
DI	<i>Diervilla lonicera</i>	Dwarf Bush Honeysuckle	18-24" H	2-4 Gallon	34" H x 3-4' W	29
TM	<i>Taxus x media</i> 'Everlow'	Everlow Yew	18-24" High	Cont.	2-3' H x 4-5' W	8
VC	<i>Viburnum cassinoides</i> 'J.N. Select'	Freedom Withered Viburnum	4-5 Gallon	Container	5' H x 5' W	15
<b>GRASSES:</b>						
CP	<i>Carex pennsylvanica</i>	Pennsylvania Sedge	Gallon		15" H x 15" W	10
SH	<i>Sporobolus heterepis</i>	Prairie Dropseed	1 Gallon		24" H x 24" W	56
SS	<i>Schizachyrium scoparium</i> 'The Blues'	The Blues Little Bluestem	1 Gallon		3' H x 18" W	30
<b>PERENNIALS:</b>						
AT	<i>Asclepias tuberosa</i>	Butterfly Weed	4.5" Pot		18" H x 12" W	8
BA	<i>Baptisia australis</i>	False Indigo	4.5" Pot		34" H x 2-3' W	1
RF	<i>Rudbeckia fulgida</i> var. <i>sullivantii</i> 'Little Goldstar'	Little Goldstar Black-Eyed Susan	4.5" Pot		14-16" H x W	16

- LANDSCAPE GENERAL NOTES**
- TRUE NORTH MAY VARY FROM PROJECT NORTH.
  - CONSTRUCTION PRACTICES, MEANS AND METHODS, AND JOB SITE SAFETY, SHALL REMAIN THE SOLE RESPONSIBILITY OF THE CONTRACTOR.
  - FIELD VERIFY ALL EXISTING AND PROPOSED UTILITIES, ELEVATIONS AND DIMENSIONS.
  - DIGGERS HOTLINE SHALL BE CALLED TO MARK UTILITIES PRIOR TO LAND DISTURBANCE.
  - RESTORE ALL AREAS TO SEEDED LAWN UNLESS NOTED OTHERWISE.
  - ALL PLANTING BEDS SHALL RECEIVE 3" THICK SHREDDED BARK MULCH AND BLACK ANODIZED ALUMINUM EDGING.
  - ALL INDIVIDUAL TREES SHALL RECEIVE 4'-0" DIAMETER, 3" THICK SHREDDED BARK MULCH TREE RING WITH SPADE CUT EDGE. MULCH SHALL BE PULLED AWAY FROM TRUNK OF TREE TO PREVENT ROT.
  - ALL LAWN TO BE RESTORED WITH SEED AND EROSION MAT OR HYDROMULCH UNLESS NOTED OTHERWISE. WIDOT URBAN TYPE B EROSION MAT SHALL BE PROVIDED ON SLOPES 4:1 OR GREATER.
  - RAIN GARDEN SHALL RECEIVE CLASS II EROSION MAT (COCONUT MAT ERONET C125 OR EQUIVALENT) WITH SPADE-CUT EDGE. MAT SHALL BE INSTALLED WITH OVERLAPPED JOINTS AND STAKED WITH HARDWOOD STAKES MIN. 8" LONG PRIOR TO INSTALLATION OF PLANTS TO PREVENT COMPACTION.
  - IN THE EVENT THAT QUANTITY DISCREPANCIES OR MATERIAL OMISSIONS OCCUR IN THE PLANT MATERIALS LIST, THE PLANTING PLANS SHALL GOVERN.
  - SEE DETAILS 21C001 AND 22C001 FOR PLANTING DETAILS.

- KEYNOTES**
- 01** NEW RAIN GARDEN: 23 KITS OF RAINWATER RENEWAL GARDEN FOR SUNNY SITES (64 PLANTS X 23 KITS = 1,472 PLANTS) BY AGRECOL OR APPROVED EQUAL PLUS 16 PLANTS OF ASCLEPIAS INCARNATA AND 16 PLANTS OF CAREX VULPINOIDEA

**Cottage Grove Landscape Requirements**

**Street Frontages:**  
 Provide 30 points for every 100' of street frontage, plant on site within 10'-0" of property lines that adjoin street. 50% shall be climax/tall trees and 30% medium trees.

Street	Street Frontage	Calculation	Points Required
Landmark Drive	378 lf	30 pts. / 100 LF	113.4
Commerce Parkway	236 lf	30 pts. / 100 LF	70.8
		Subtotal	184

**Provided Landscaping**

Plant	Point Value	Quantity	Provided Landscape Points
Climax Deciduous Tree, 2" Cal.	75	ea 2	150
Tall Deciduous Tree, 2" Cal.	30	ea 2	60
		Subtotal	210

**Paved Areas:**  
 Provide 30 landscape points per 10,000 sf of paved area. At least 30% of points shall be climax or tall trees, and a minimum of 40% of points shall be shrubs. Plant within 10' of paved area.

	Area	Calculation	Required Landscape Points
Paved Surface Area	30,459 sf	30 points / 10,000 sf	91

**Provided Landscaping**

Plant	Point Value	Quantity	Provided Landscape Points
Climax Deciduous Tree, 2" Cal.	75	ea 1	75
Medium Deciduous Shrub	3	ea 29	87
		Subtotal	162

**Building Foundation:**  
 Provide 30 landscape points per 100 lf of building foundation.

	Perimeter	Calculation	Required Landscape Points
Building Foundation Perimeter	596 lf	30 points per 100 LF	179

**Provided Landscaping**

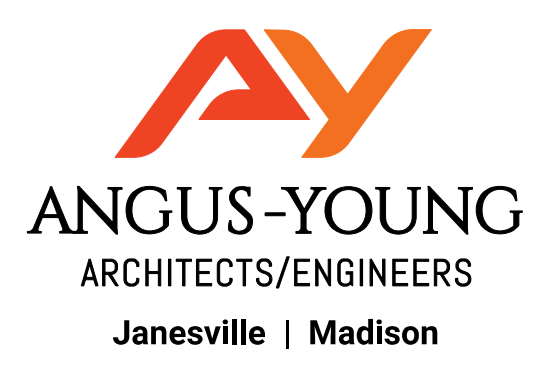
Plant	Point Value	Quantity	Provided Landscape Points
Low Deciduous Tree, 6" Tall	10	ea 4	40
Medium Evergreen Shrub, 18" Tall	5	ea 8	40
Tall Deciduous Shrub, 36" Tall	5	ea 15	75
Low Deciduous Shrub, 18" Tall	1	ea 33	33
		Subtotal	188

**Developed Lots:**  
 Provide 10 landscape points per 1,000 sf of building footprint.

	Area	Calculation	Required Landscape Points
Building Footprint	19,722 sf	10 pts./1,000 sf	197

**Provided Landscaping**

Plant	Point Value	Quantity	Provided Landscape Points
Climax Deciduous Tree, 2" Cal.	75	ea 3	225
		Subtotal	225



BRANDtek DEVELOPMENT

LANDMARK DRIVE & COMMERCE PARKWAY  
 COTTAGE GROVE, WI

**ISSUANCES / REVISIONS**

NO:	DESCRIPTION:	DATE:

Due to electronic distribution, this drawing not be printed to the scale indicated on the drawings. Do NOT use scale to determine dimensions or sizes.

No part of this drawing may be used or reproduced in any form or by any means, or stored in a database or retrieval system, without prior written permission of.

ANGUS-YOUNG ASSOCIATES, INC.  
 Copyright © 2021 All Rights Reserved

PROJECT NUMBER  
 71620

APPROVED BY  
 XXX

REVIEWED BY  
 XXX

DRAWN BY  
 KAU

LANDSCAPE PLAN

**C601**

PRELIMINARY - NOT FOR CONSTRUCTION

SCALE: 1"=30'-0"

X:\171620\cad\171620shC601.dgn

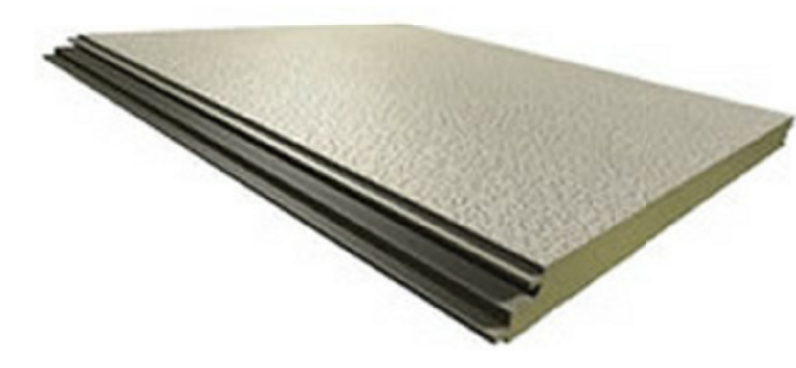
PLOTTED BY: kahu

ORIGINAL SIZE: 24" x 36"

THESE DRAWINGS ARE FOR BIDDING AND CONSTRUCTION PURPOSES ONLY. THE GENERAL CONTRACTOR IS RESPONSIBLE FOR ALL ACCURACY AND DIMENSION VERIFICATION FOR ALL CONDITIONS.

**EXTERIOR MATERIALS**

**INSULATED METAL PANEL**



Regal White Pearl Gray Sandstone

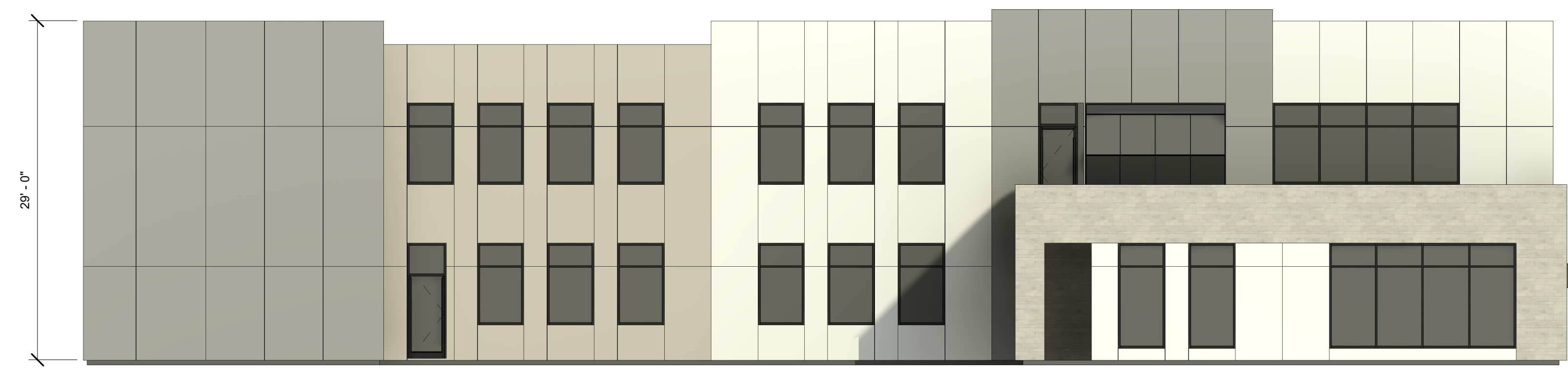
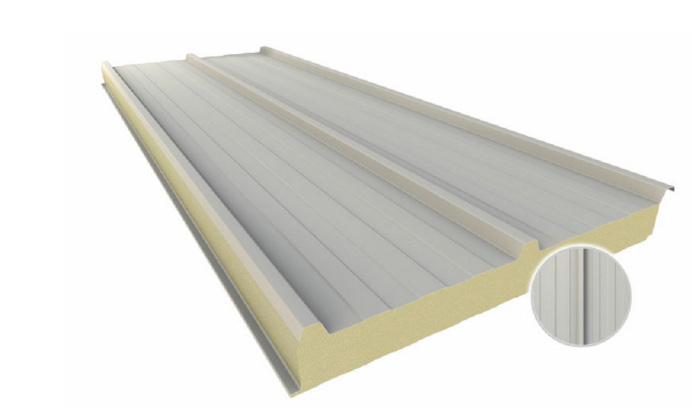
**NATURAL STONE**



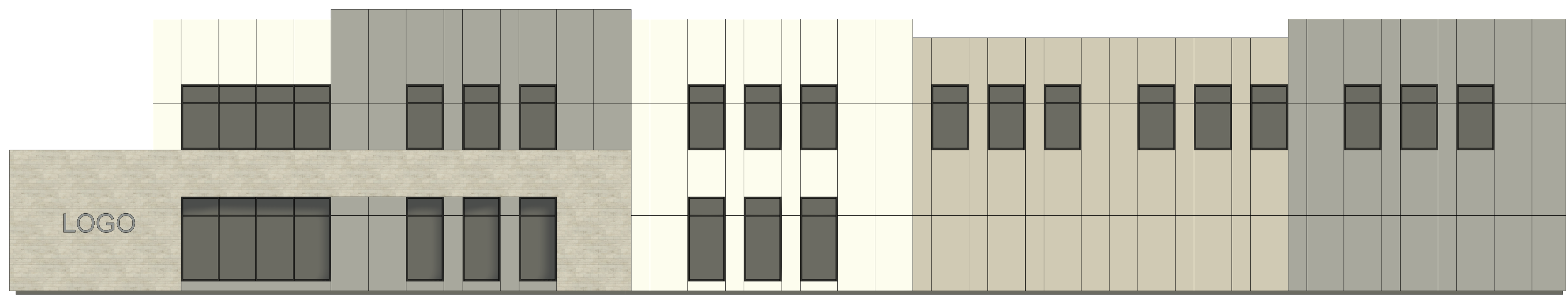
**STOREFRONT - BRONZE**



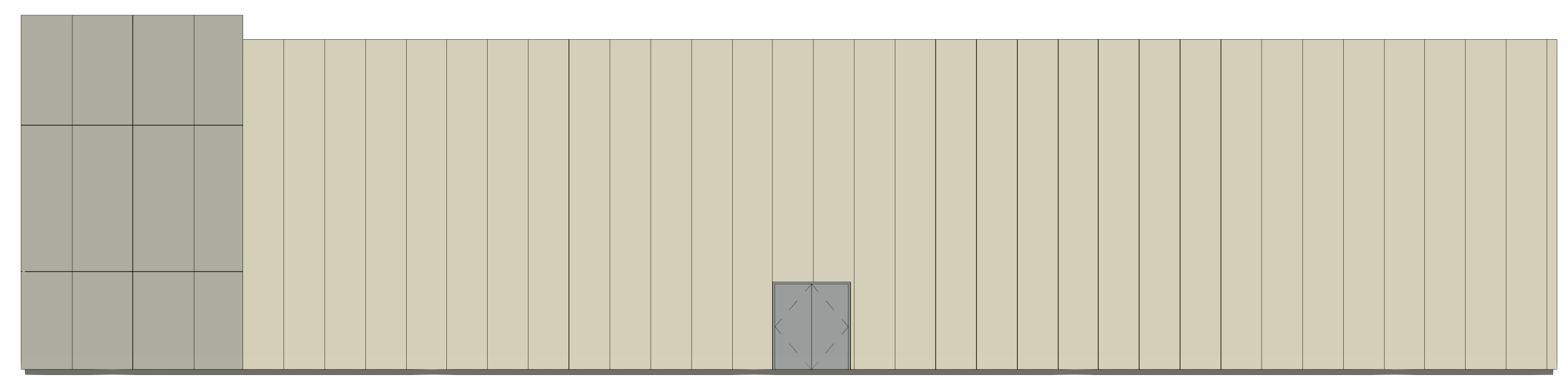
**INSULATED METAL ROOF PANEL**



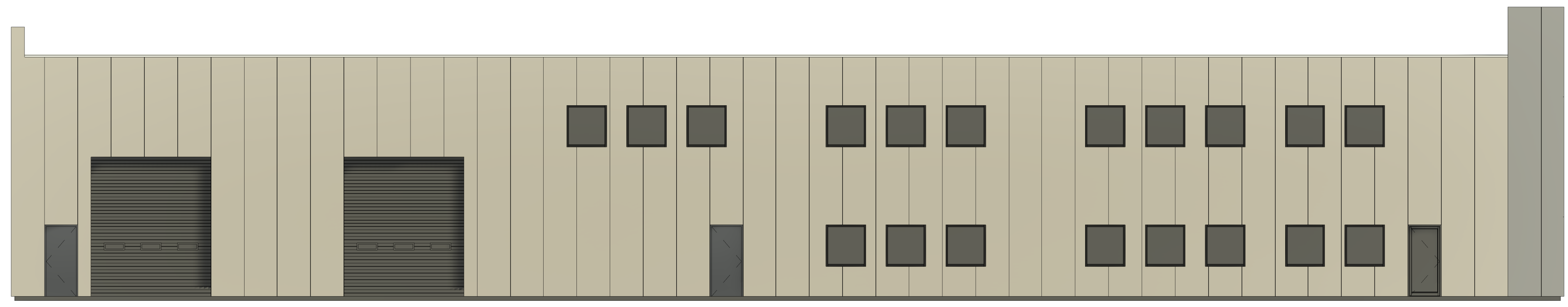
**1 NORTH ELEVATION**  
SCALE: 1/8" = 1'-0"



**2 WEST ELEVATION**  
SCALE: 1/8" = 1'-0"



**3 SOUTH ELEVATION**  
SCALE: 1/8" = 1'-0"



**4 EAST ELEVATION**  
SCALE: 1/8" = 1'-0"

**AVID REALESTATE**  
LANDMARK DR. AND COMMERCE PKWY,  
COTTAGE GROVE WI

2	PRELIMINARY ELEVATIONS	4/27/21
No.	Description	Date
	Document Release	

Dim: Author

Sheet Name  
**CONCEPTUAL ELEVATIONS**

Scale: 1/8" = 1'-0"

Sheet Number

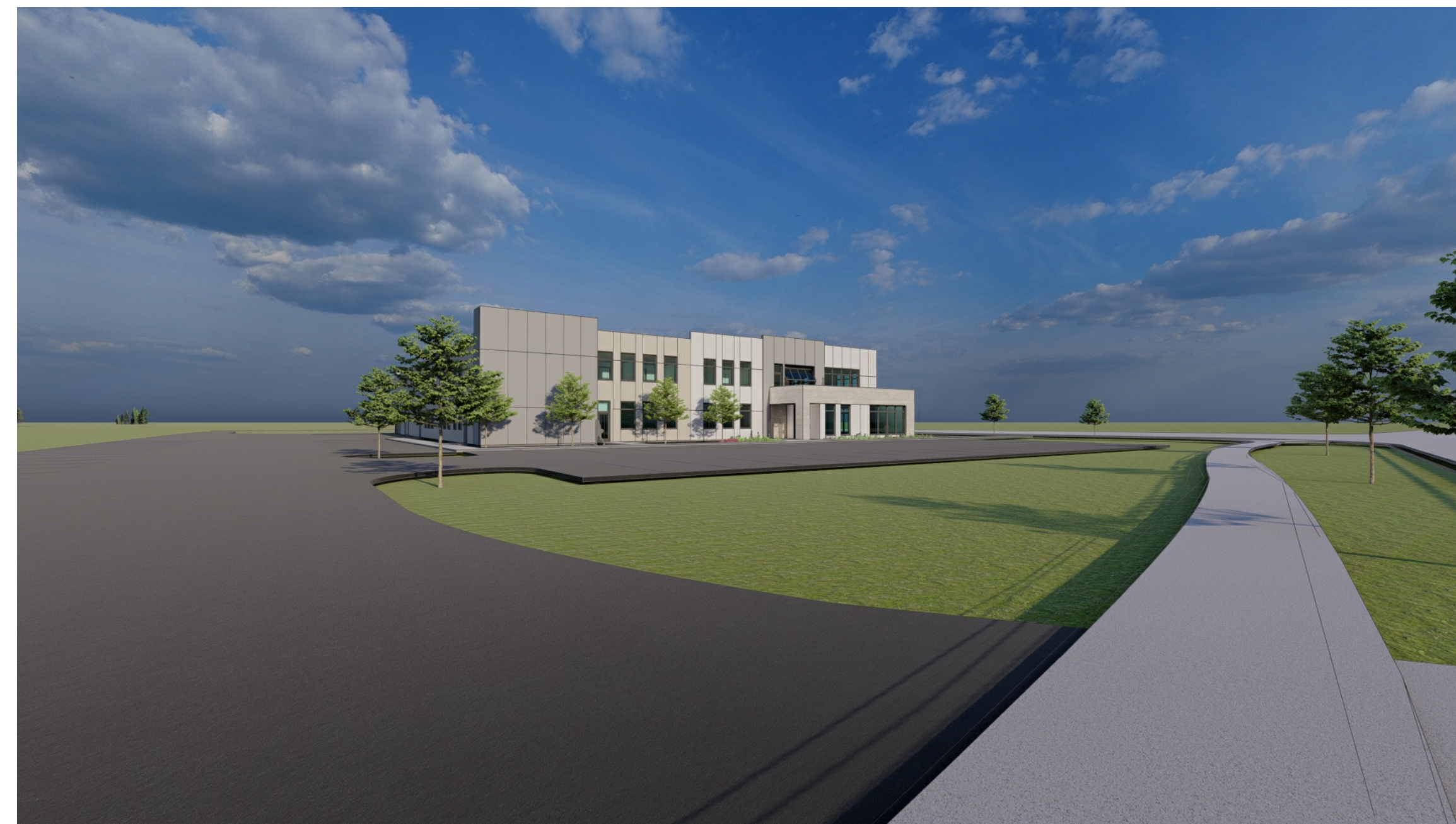
**A201**



NORTH FACE



NORTH AND WEST FACE



NORTH FACE



WEST FACE



WEST AND SOUTH FACE



SOUTH AND EAST FACE

**AVID REALESTATE**  
LANDMARK DR. AND COMMERCE PKWY,  
COTTAGE GROVE WI

No.	Description	Date
	Document Release	

Dm:Author

Sheet Name  
**CONCEPTUAL RENDERINGS**

Scale:

Sheet Number

**A701**