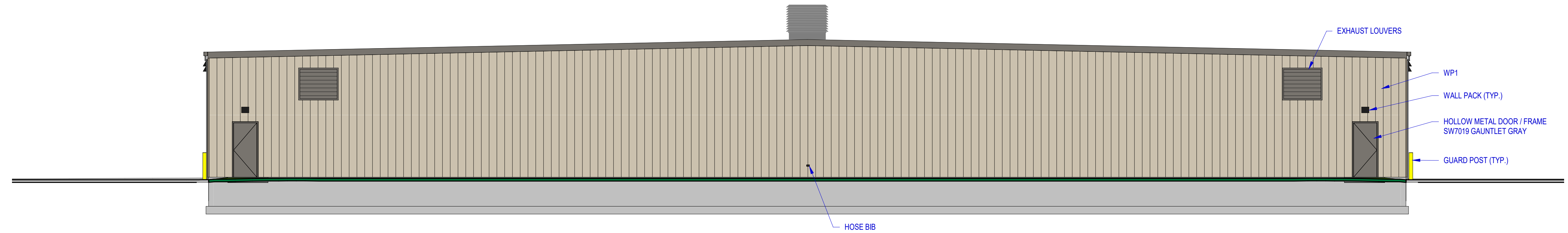
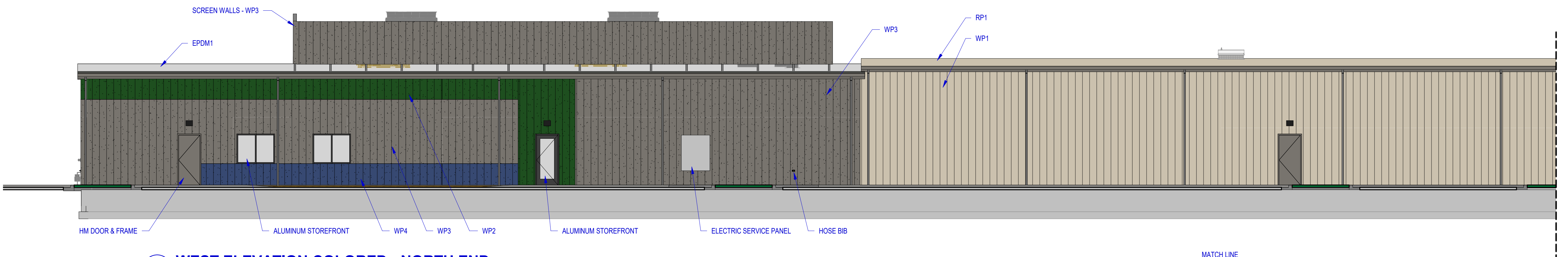


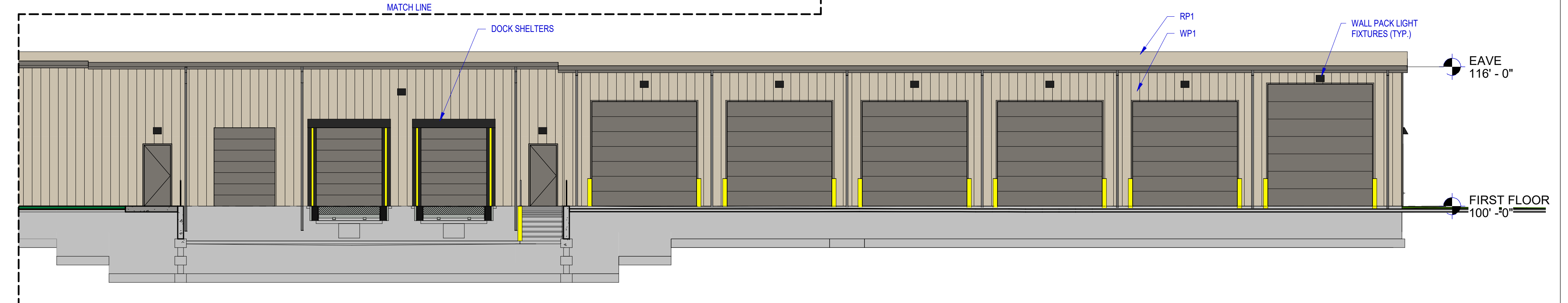
6 NORTH ELEVATION COLORED
A302 1/8" = 1'-0"



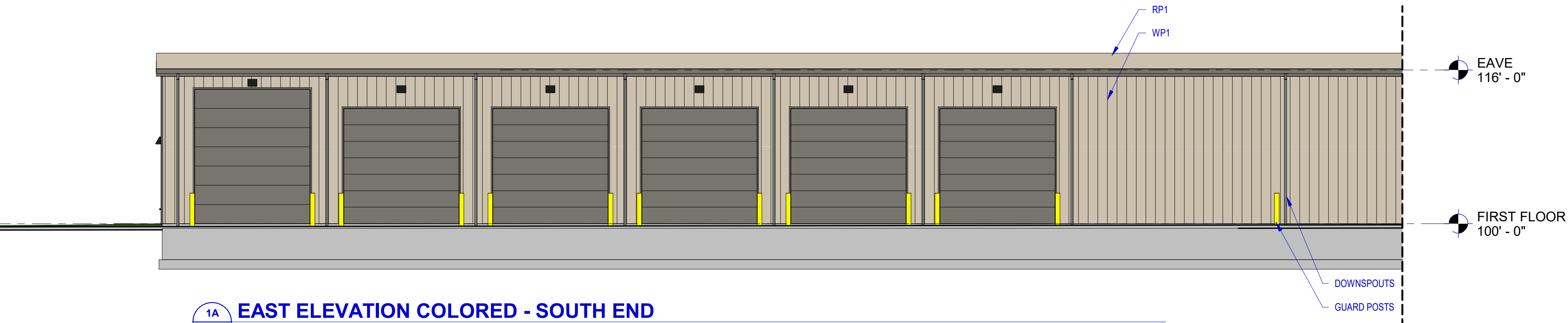
5 SOUTH ELEVATION COLORED
A302 1/8" = 1'-0"



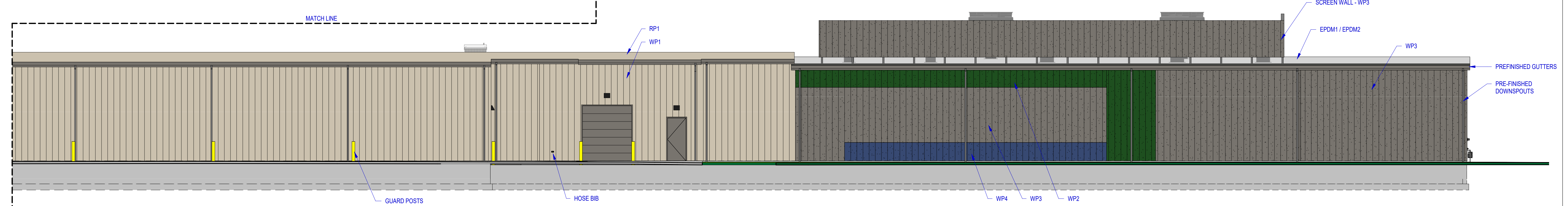
4 WEST ELEVATION COLORED - NORTH END
A302 1/8" = 1'-0"



3 WEST ELEVATION COLORED - SOUTH END
A302 1/8" = 1'-0"



1A EAST ELEVATION COLORED - SOUTH END
A302 1/8" = 1'-0"



1 EAST ELEVATION COLORED - NORTH END
A302 1/8" = 1'-0"

EXTERIOR MATERIAL KEY	
RP1	METAL ROOF PANEL #1 24 GAGE STANDING SEAM 360 METAL PANEL SMARTKOTE - WARM WHITE - GALVALUME FINISH
EPDM1	EPDM ROOF MEMBRANE #1 60 MIL. FULLY ADHERED COLOR: GRAY
EPDM2	EPDM ROOF MEMBRANE #1 60 MIL. FULLY ADHERED, TPO (AROUND KITCHEN HOODS) COLOR: GRAY
WP1	METAL WALL PANEL #1 28 GAGE ARCHITECTURAL III METAL PANEL SMARTKOTE - WARM WHITE - PVDF FINISH
WP2	METAL WALL PANEL #2 STRUKTURC STK 2000 STUCCO CHOICE TEXTURED METAL PANEL CUSTOM COLOR - SMARTKOTE EVERGREEN
WP3	METAL WALL PANEL #4 STRUKTURC STK 2000 STUCCO CHOICE TEXTURED METAL PANEL GRAY
WP4	METAL WALL PANEL #3 STRUKTURC STK 2000 STUCCO CHOICE TEXTURED METAL PANEL CUSTOM COLOR - SMARTKOTE ROYAL BLUE
	EAVE FLASHING, RAKE FLASHING, VERTICAL CORNER TRIM 28 GAGE PRE-FINISHED METAL SMARTKOTE GRAY - PVDF FINISH
	GUTTERS AND DOWNSPOUTS 28 GAGE PRE-FINISHED METAL SMARTKOTE GRAY - PVDF FINISH
	ALUMINUM STOREFRONT WINDOWS COLOR: BLACK ANODIZED, CLEAR LOW-E GLAZING
	HOLLOW METAL DOORS AND FRAMES COLOR: SW7019 GAUNTLET GRAY

ISSUE DATES:

Issue	Description	Date
CS1	CITY SUBMITTAL #1	04-28-21

This document contains confidential or proprietary information of Iconica. Neither the document nor the information herein is to be reproduced, distributed, used or disclosed, either in whole or in part, except as specifically authorized by Iconica.